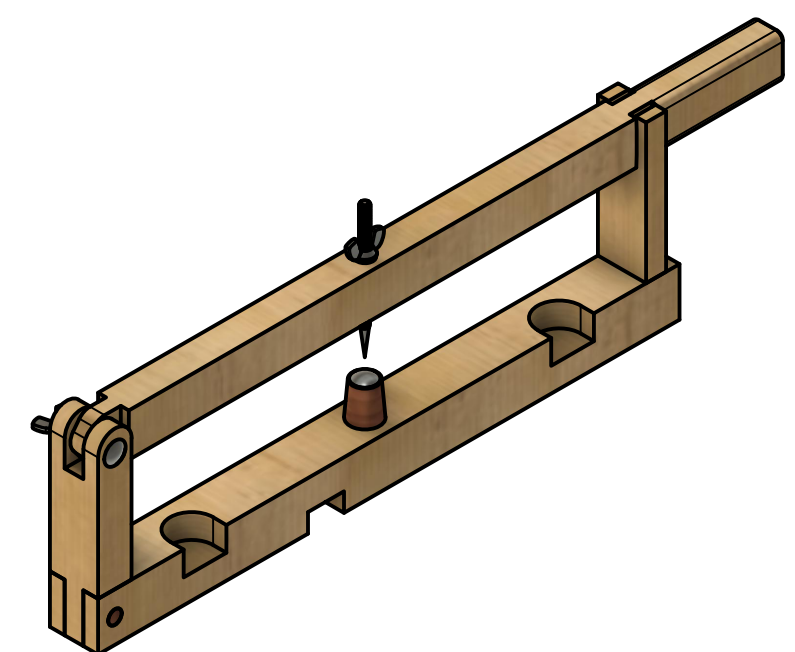
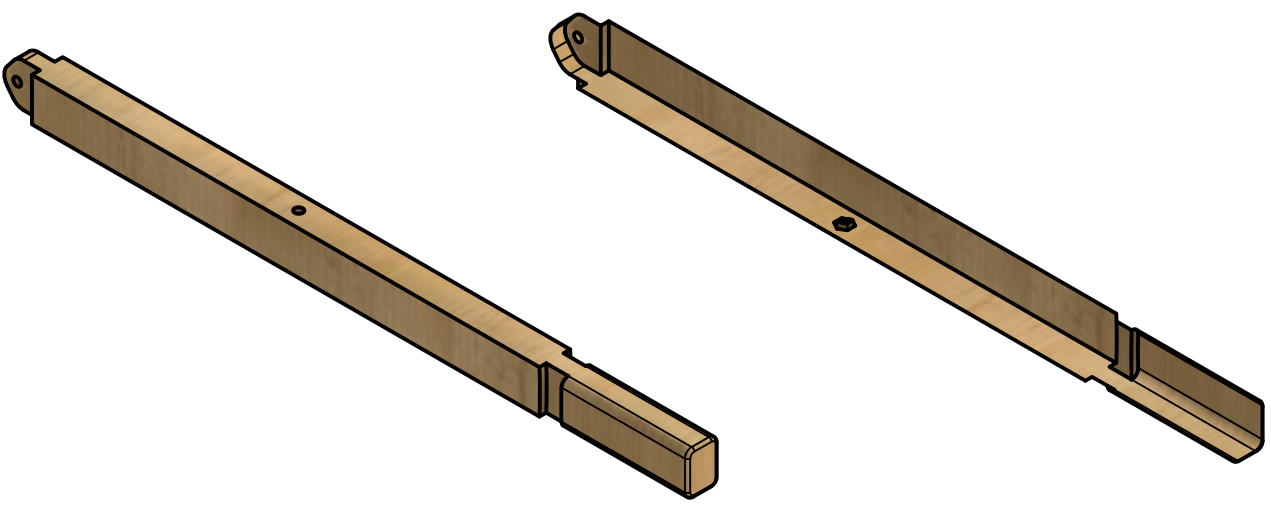
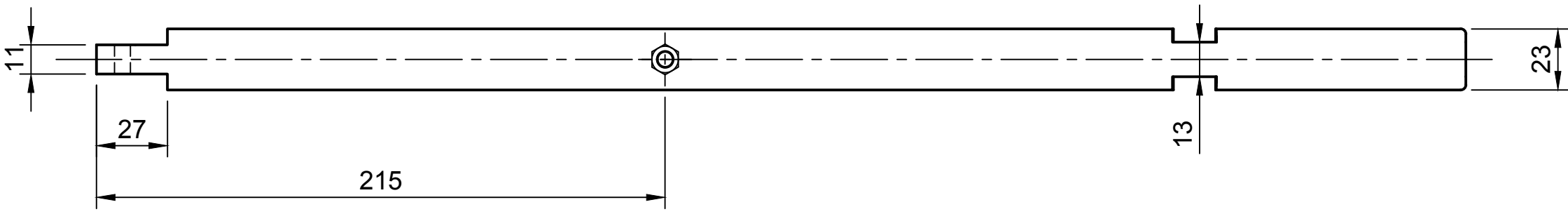
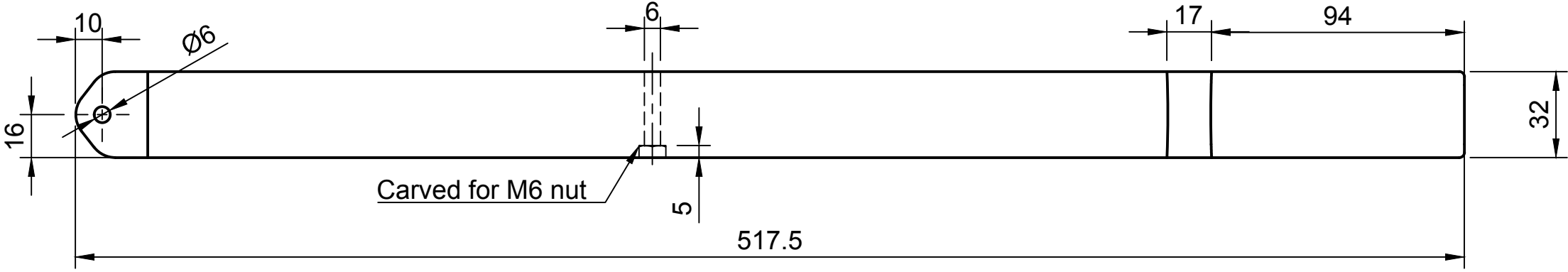
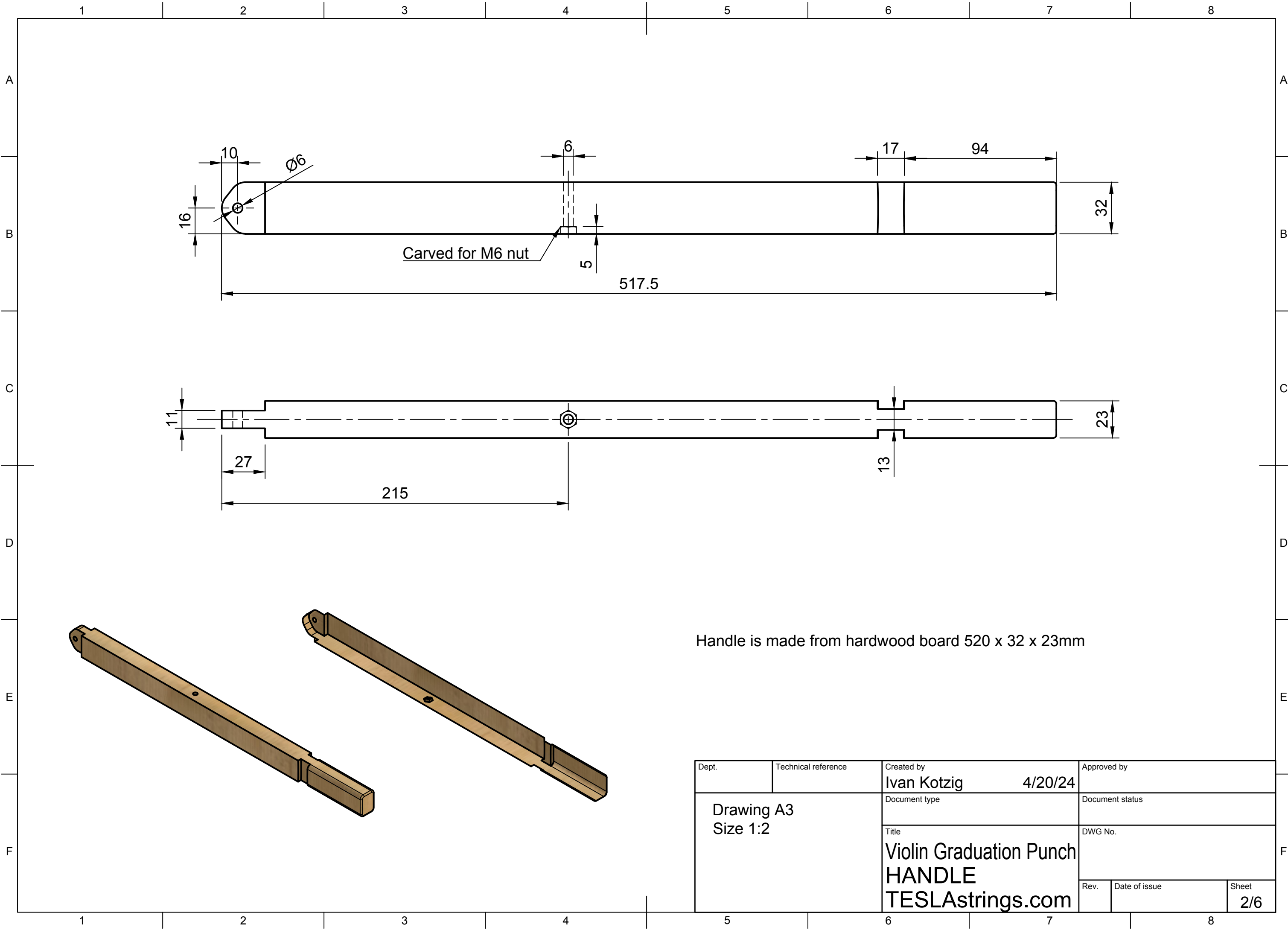


- 6 pcs of hardwood boards are needed:
- Handle 520 x 32 x 23mm
 - Base 435 x 36 x 36mm
 - Handle Stop 140 x 36 x 15mm
 - Handle Support 140 x 36 x 25mm
 - Anvil 25 x 22 x 22mm
 - Thickness Gauge 150 x 10 x 8mm

Complete kit available at TESLAstrings.com

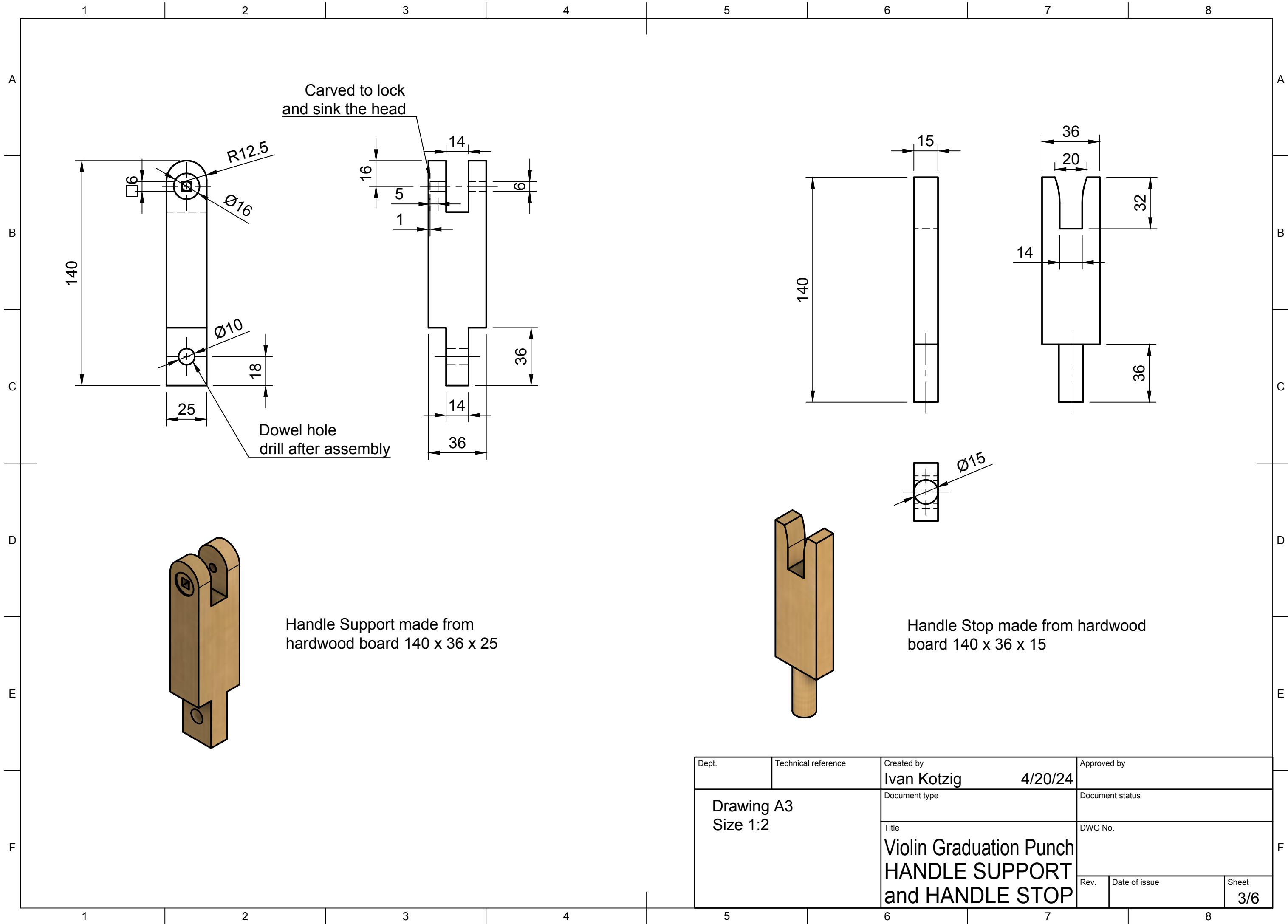


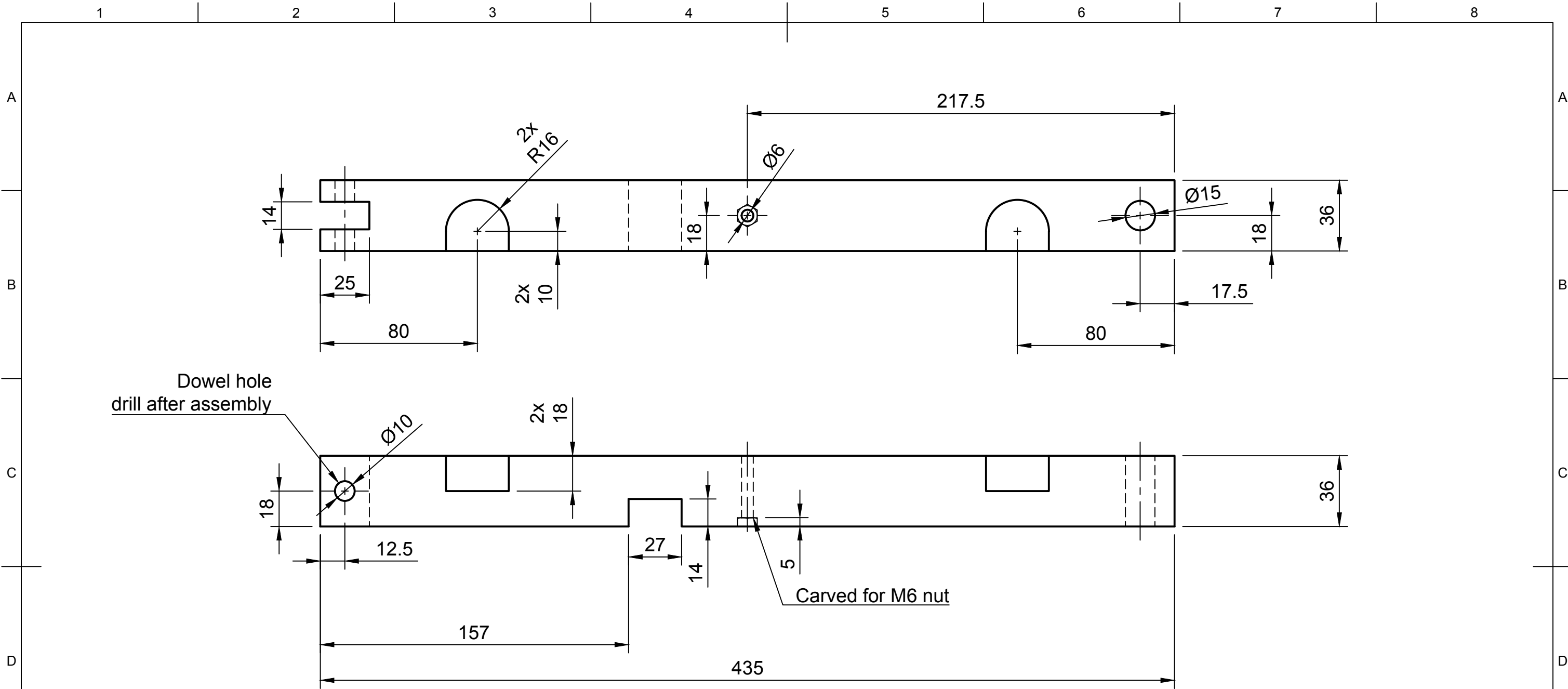
Dept.	Technical reference	Created by Ivan Kotzig	4/20/24	Approved by
Drawing A3 Size 1:2		Document type		Document status
		Title Violin Graduation Punch ASSEMBLY TESLAstrings.com		DWG No.
Rev.	Date of issue	Sheet		1/6



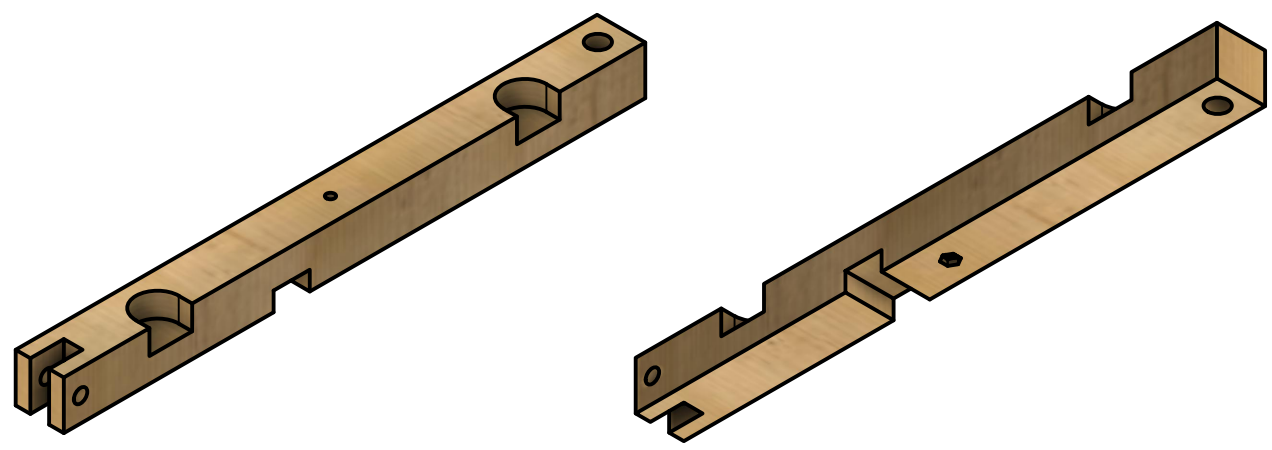
Handle is made from hardwood board 520 x 32 x 23mm

Dept.	Technical reference	Created by Ivan Kotzig	4/20/24	Approved by
Drawing A3 Size 1:2		Document type	Document status	
		Title Violin Graduation Punch HANDLE TESLAstrings.com	DWG No.	
Rev.	Date of issue	Sheet		2/6

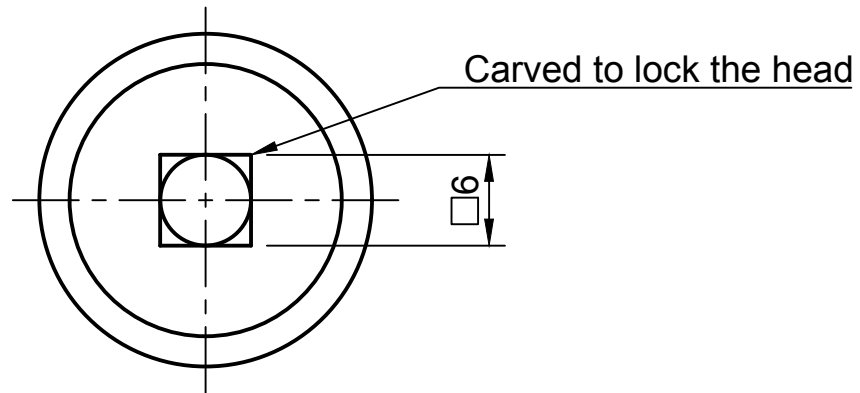
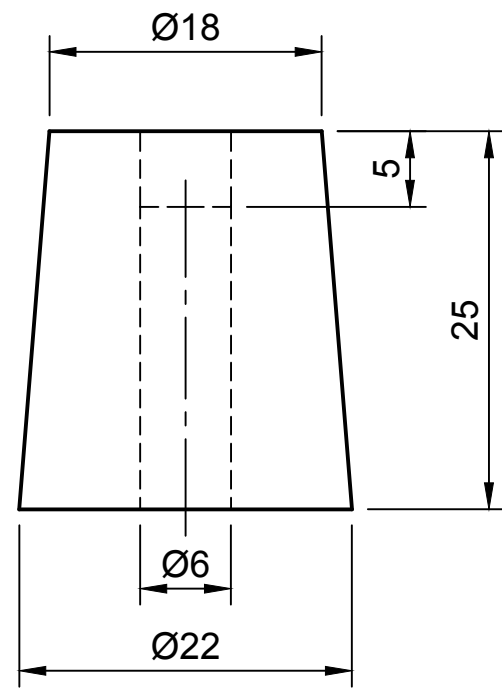




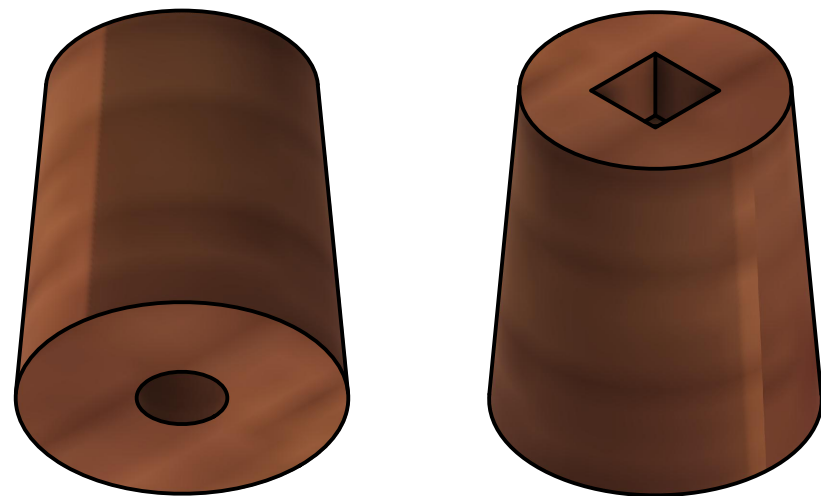
Base is made from hardwood board 435 x 36 x 36mm



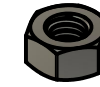
Dept.	Technical reference	Created by Ivan Kotzig	4/20/24	Approved by
Drawing A3 Size 1:2		Document type	Document status	
		Title Violin Graduation Punch BASE TESLAstrings.com	DWG No.	
Rev.	Date of issue	Sheet 4/6		



Anvil is made from hardwood block
25 x 22 x 22mm



2x DIN315 M6 Wing Nut
HWR-0124



2x DIN934 M6 Hex Nut
HWR-0121



2x DIN125A M6 Washer
HWR-0122



1x DIN603 M6x40 Square-Neck
Carriage Bolt
HWR-0123

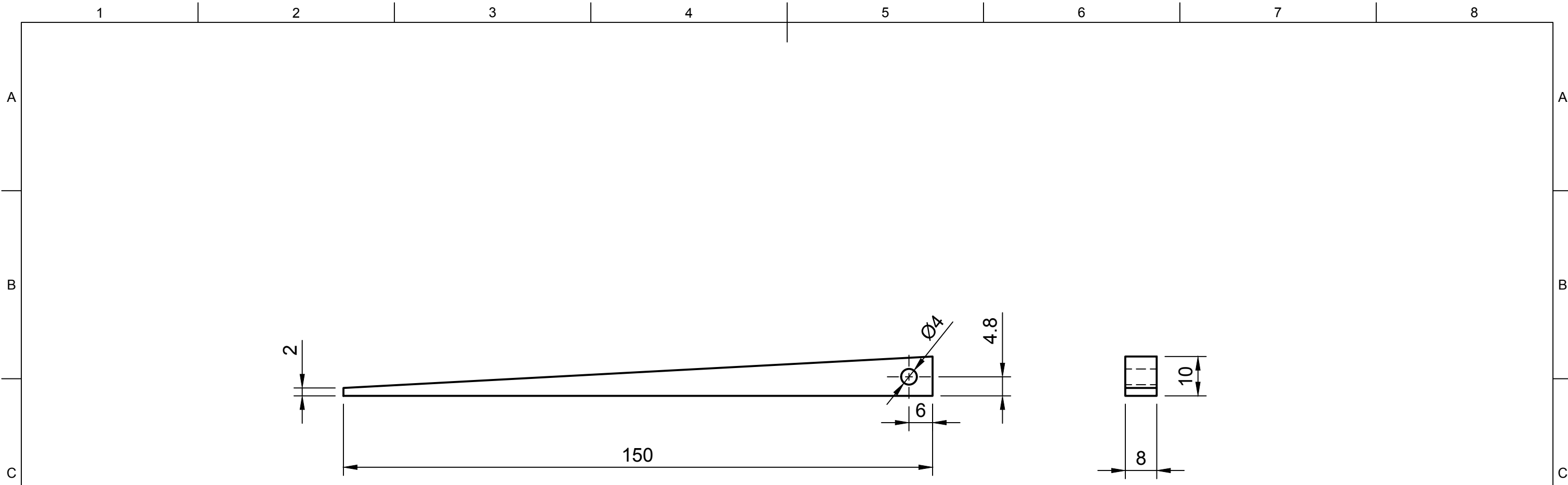


1x DIN603 M6x60 Square-Neck
Carriage Bolt
HWR-0120

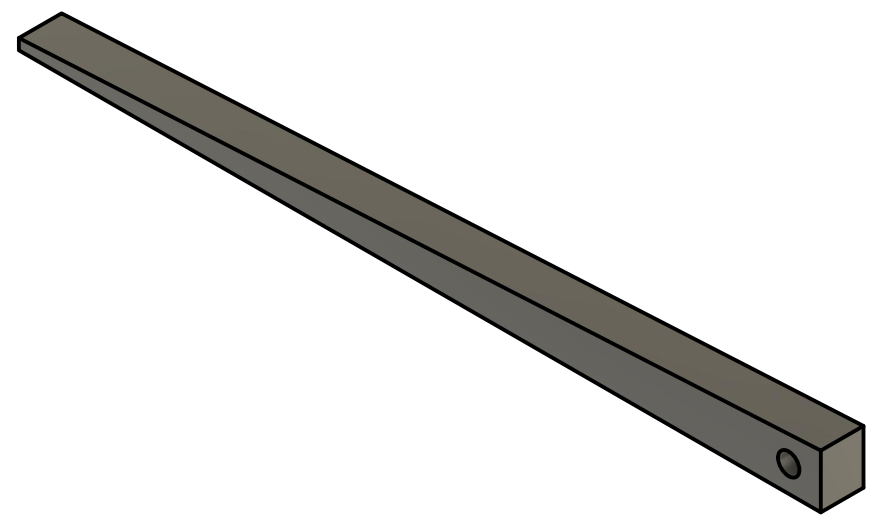


1x M6 rod, 100mm long, sharpened to needle point

Dept.	Technical reference	Created by Ivan Kotzig	4/20/24	Approved by
Drawing A3 Size 2:1		Document type		Document status
		Title Violin Graduation Punch ANVIL TESLAstrings.com		DWG No.
		Rev.	Date of issue	Sheet 5/6



hardwood 150 x 10 x 8mm



Dept.	Technical reference	Created by Ivan Kotzig	4/20/24	Approved by
Drawing A3 Size 1:1		Document type		Document status
		Title Violin Graduation Punch THICKNESS GAUGE TESLAstrings.com		DWG No.
		Rev.	Date of issue	Sheet 6/6